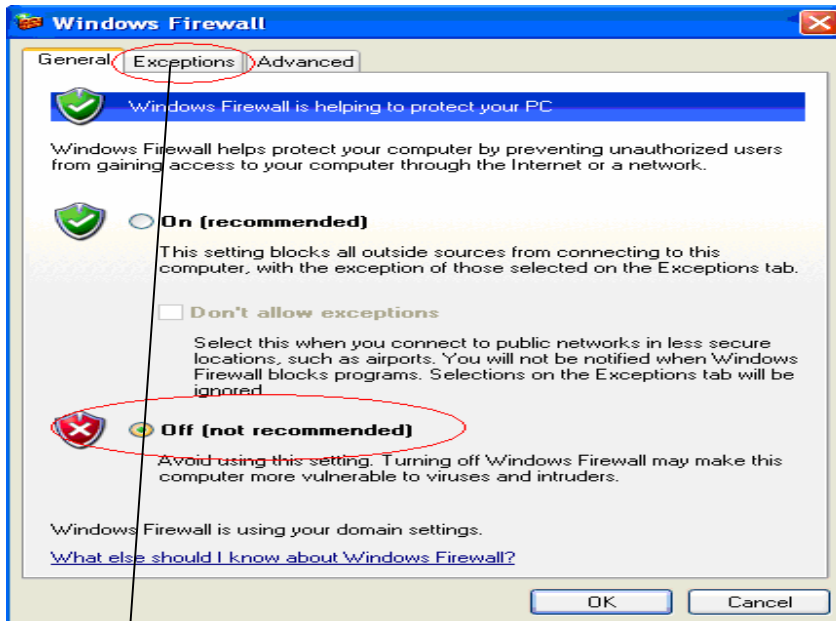


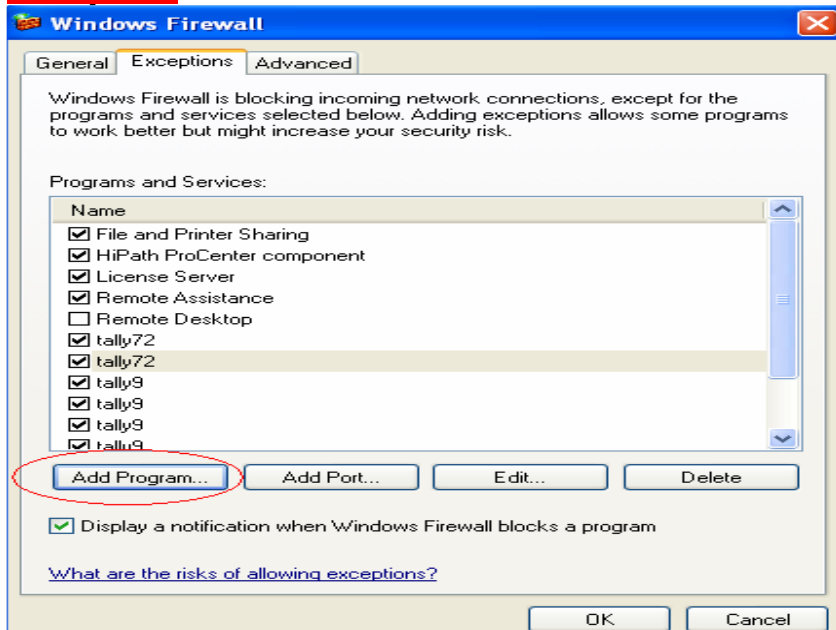
# Proxy Settings And Firewalls

## How Do I Disable the Proxy Or Give exceptions For Tally

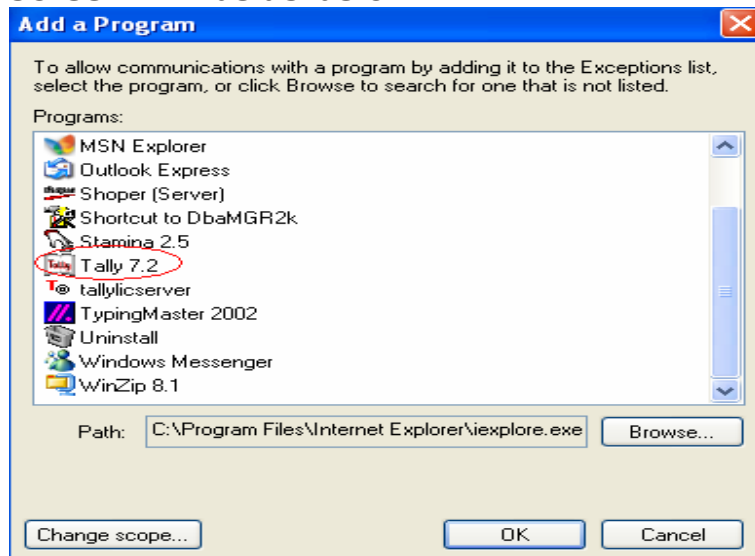
Go to Control panel of the System and You find the option of Window's Firewalls(in case of Operating System Xp,Vista) double click on that the screen will come as below



Click on Off to disable the firewall but it is not advisable so we can give the exceptions in the same we have the option of Exception click on that the screen will be as below



**To add new program click on the option New Program the screen will be as below**



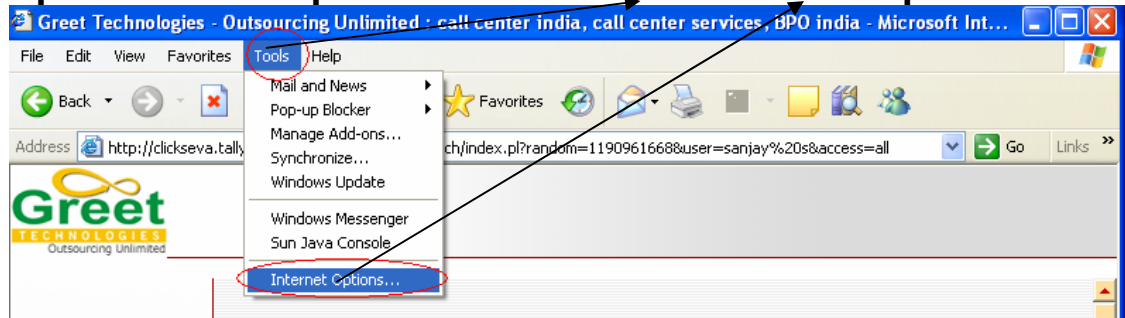
**Select the program which is to be added and click on OK and accept all the screen**

**If this thing is done when activating the Licence Of tally the Firewall will not block the request and if the tally is Multi User it will not block the licence which is shared in LAN**

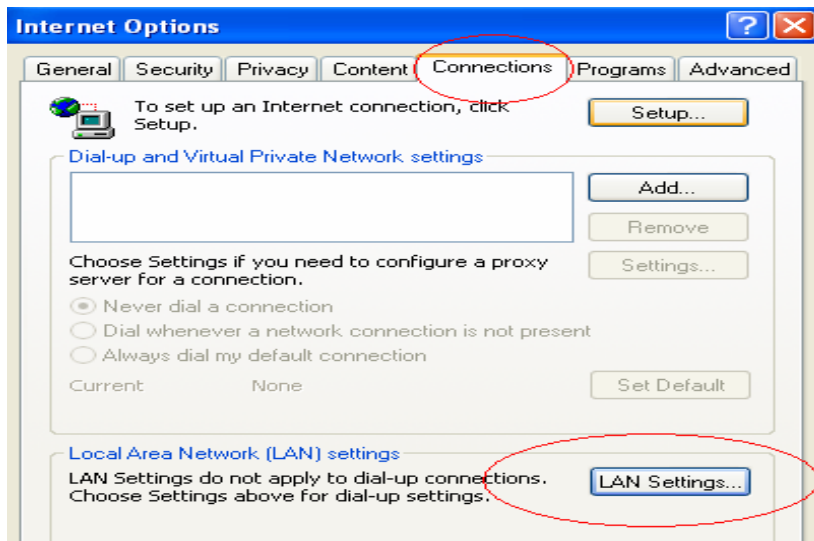
### **Proxy Setting:**

**How do I check the proxy settings**

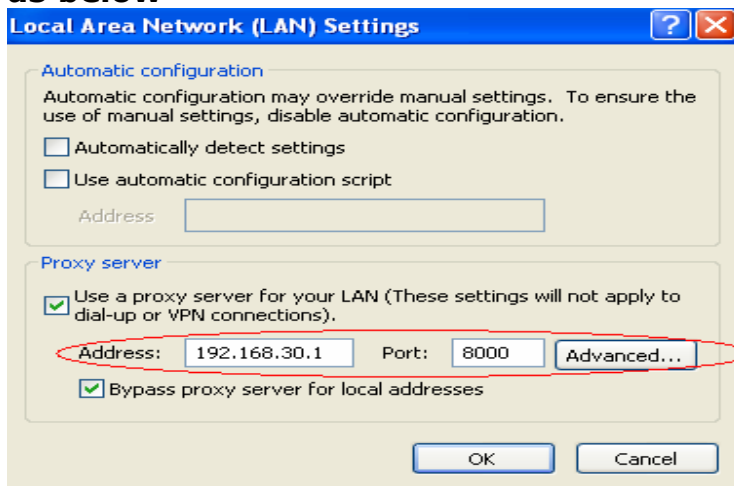
**Open Internet Explorer→Click on Tools→Internet Option**



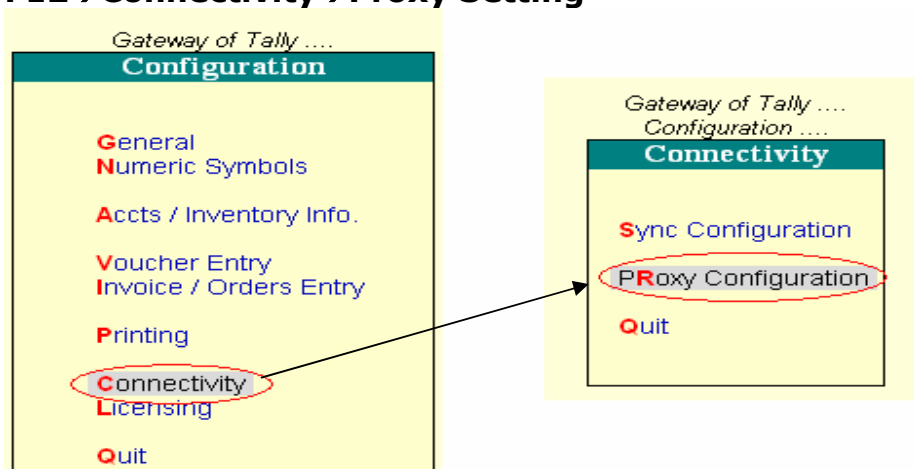
**As soon as you click on that the screen appears as below**



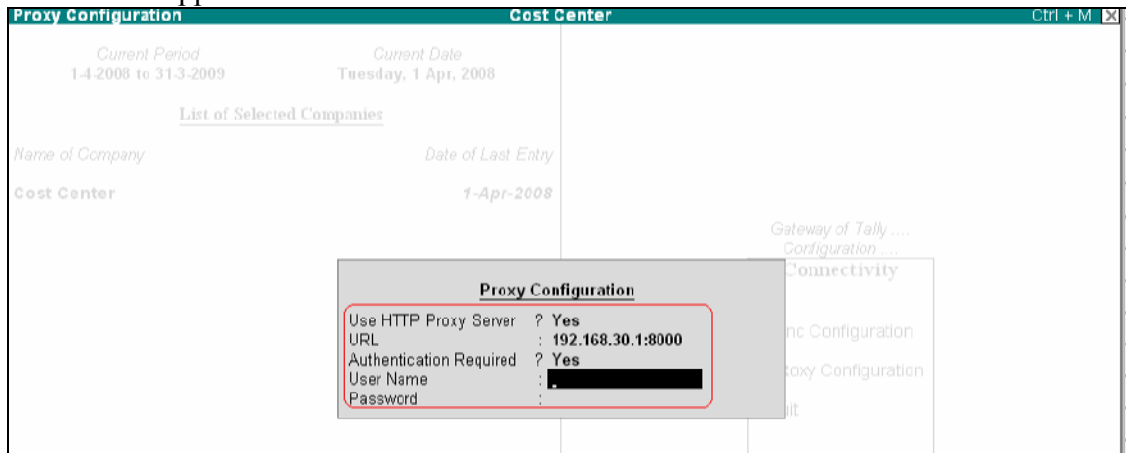
Click on connection then click on Lan setting the screen will be as below



Make note of the address open Tally Press F12→Connectivity→Proxy Setting



The Screen Appers As Below



Set the Option Use HTTP Proxy Server To Yes

in URL Give the Ipaddress which has noted above then the Port Number Spered by Colon(:)

Authentication Required :If they have mentioned any authentication for Internet they need to set this option TO YES and then give the user name and Password and accept the screen