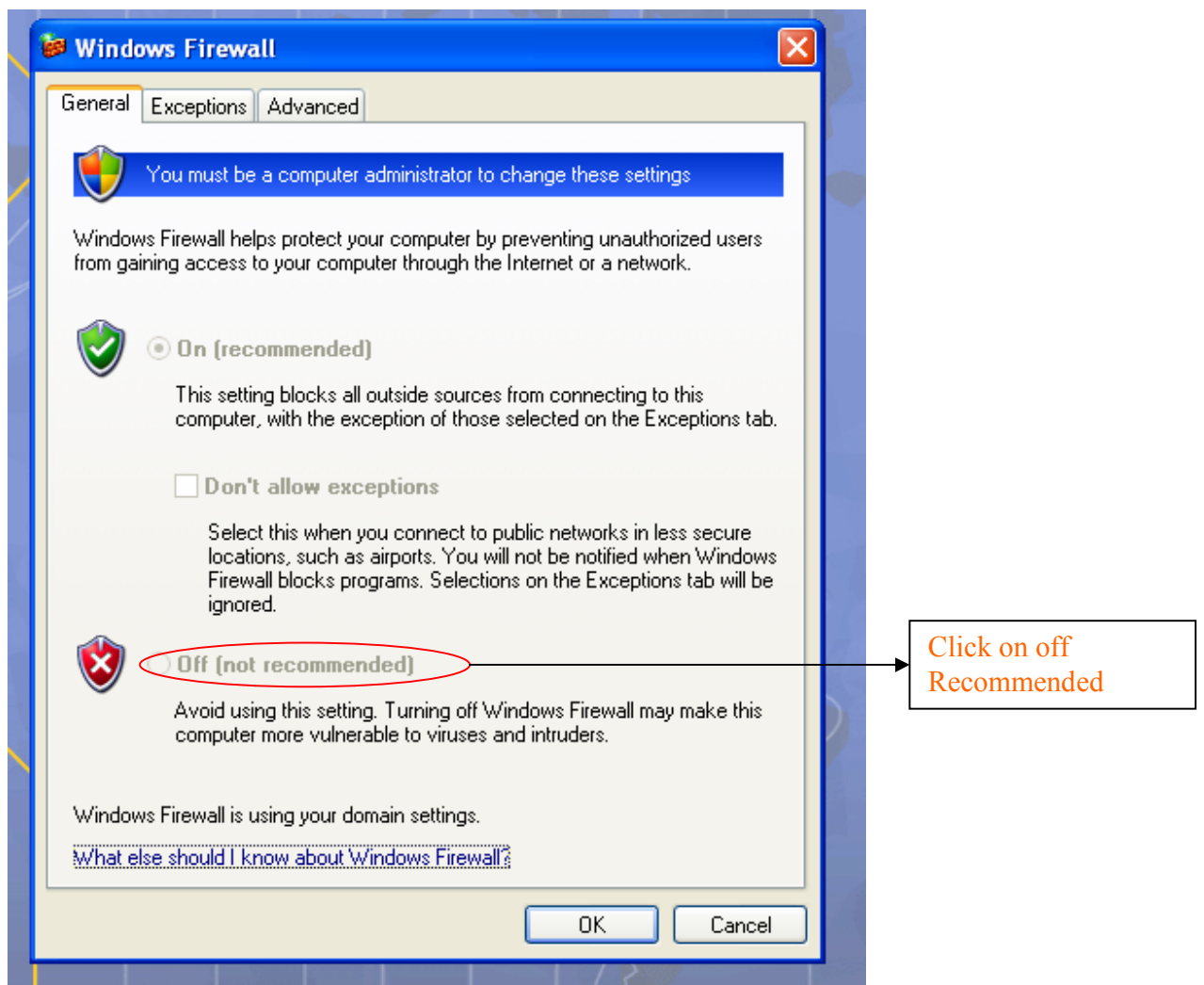


Checklist for Client Machines (Nodes), if Tally nodes are showing Educational

Initial steps :

1. Check the System Date and time of the Client machine.
2. Tally Releases should be same in both Server and Client machines.
3. Disable antivirus and firewall (*start menu>settings > control panel>security center>windows firewall*) then the screen will appear as shown below



4. Now execute Tally in the Client machine and check

If still client machine shows educational mode follow the checklist mentioned below :

Server machine settings :

1. Open Tally.ini and check the settings:

TallyLicense = Connect

(Remove the semi colons(;;) in the beginning, if any)

;;TallyLicenseServer= Server:Port

(Do't Remove the semi colons(;;) in the beginning, if any)

TallyLock = None

TallyLockServer = No

2. Operating system is win 2000\NT\2003\ XP

Open "*Tallylicserver.exe*" file from tally folder and click on uninstall and install

If operating system is win 98

Open "*Tallylic9xserver.exe*"

(Always uninstall button has to be highlighted)

3. Open tally in server machine and don't close tally in server machine then follow the

client machine settings as shown below:

1.open tally.ini and check the settings

- Tallylicense=connect
- **Tallylicenseserver=ip address or server name:9000**
[remove the semi colons(;;)in the beginning ,if any
- TallyLock = NONE
- TallyLockServer = No

2. Open "*Tallylicserver.exe*" file in tally folder and if uninstall is highlighted click on it
(always install has to be highlighted if O/S is win 2000\NT\2003\ XP)or

→ Open "*Tallyli9xserver.exe*" file in tally folder and if uninstall is highlighted click on it"
(always install has to be highlighted if O/S is win 98)

3. Now execute Tally and check.

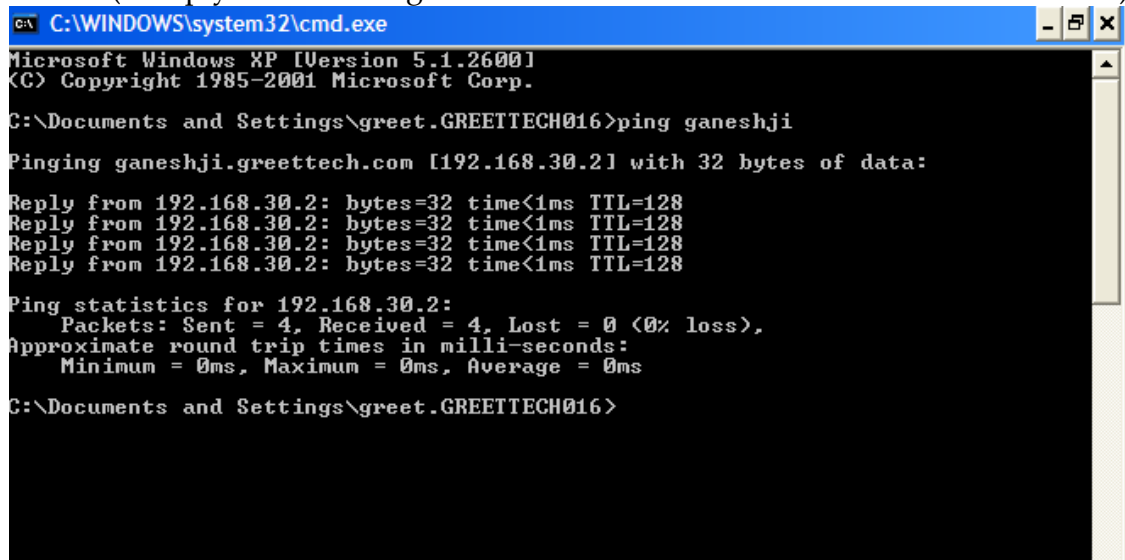
After following the ini settings and reinstalling the licserver in server and client machine if still problem persist follow the steps mentioned below :

1. Open Command prompt (Start → Run >→ Command)

Type:

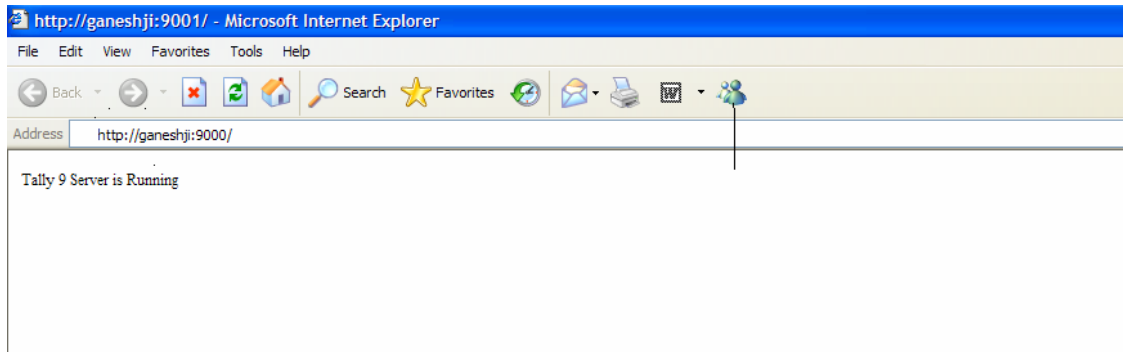
“Ping” servername or ipaddress and press enter. Check if you are getting a reply from the server

(If reply is not coming ask the customer to solve the network connection)



```
C:\WINDOWS\system32\cmd.exe
Microsoft Windows XP [Version 5.1.2600]
(C) Copyright 1985-2001 Microsoft Corp.
C:\Documents and Settings\greet.GREETTECH016>ping ganeshji
Pinging ganeshji.greettech.com [192.168.30.2] with 32 bytes of data:
Reply from 192.168.30.2: bytes=32 time<1ms TTL=128
Reply from 192.168.30.2: bytes=32 time<1ms TTL=128
Reply from 192.168.30.2: bytes=32 time<1ms TTL=128
Reply from 192.168.30.2: bytes=32 time<1ms TTL=128
Ping statistics for 192.168.30.2:
    Packets: Sent = 4, Received = 4, Lost = 0 (0% loss),
    Approximate round trip times in milli-seconds:
        Minimum = 0ms, Maximum = 0ms, Average = 0ms
C:\Documents and Settings\greet.GREETTECH016>
```

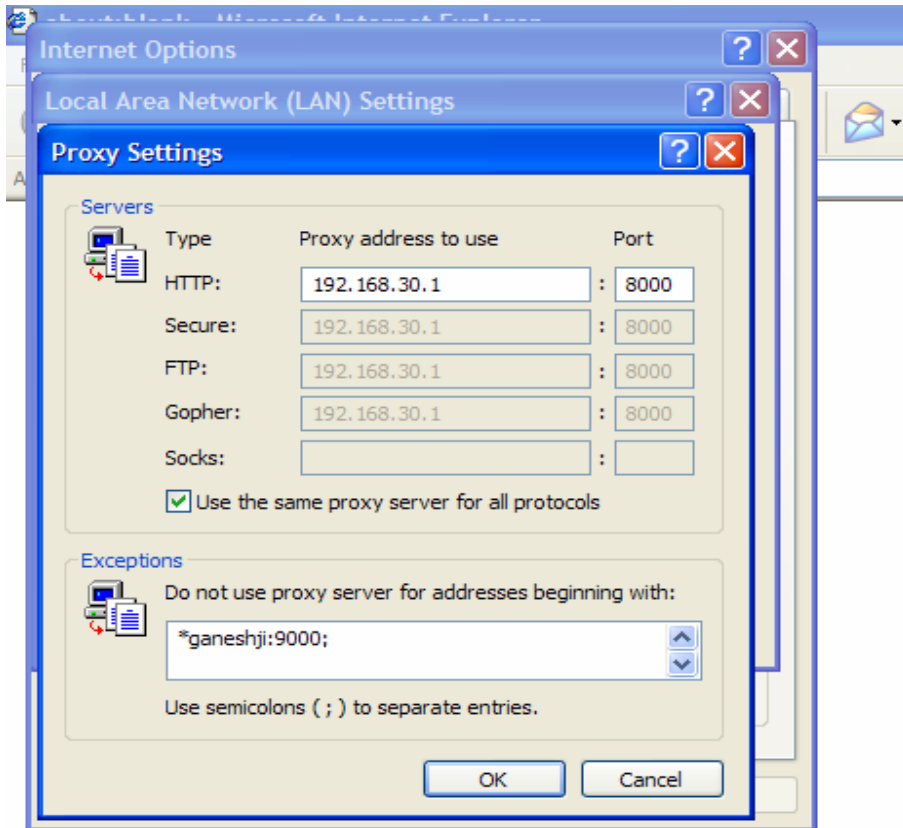
2. Open Internet explorer, in the address bar type <http://ganesh:9000> [if it is user defined port then <http://ganeshji:9000>] and check whether message “Tally Server is Running” is displayed.



3. Open **Internet explorer**, click on **Tools** → **Internet options** → **Connections**
Click on **LAN setting** tab and check whether **use a proxy server for LAN** is ticked.

Untick the proxy server

If he is using proxy server then tick on **By pass proxy server also** and click on **Advance button** and in the exceptions box, type the IPAddress of your server



If all the settings are fine still the same problem change the port number and reinstall the licserver file in server and client. AS shown below

1. In the server machine tally ini

```
::TallyLicenseServer=IP Address or Servername:Port ,  
clientserver=server  
serverport=45000
```

2. operating system is win 2000\NT\2003\ XP

Open "*Tallylicserver.exe*" file in tally folder and click on uninstall and install

If operating system is win 98

Open "*Tallylic9xserver.exe*"

(Always uninstall button has to be highlighted)

3. open tally in server machine and don't close tally in server machine

4. open tally ini file in the CLIENT MACHINE

tallylicenseserver= servername:45000

5. Open "*Tallylicserver.exe*" file in tally folder and if uninstall is highlighted click on it

(always install has to be highlighted if O/S is win 2000\NT\2003\ XP)or

→ Open "*Tallyli9xserver.exe*" file in tally folder and if uninstall is highlighted click on it"

(always install has to be highlighted if O/S is win 98)

6. Now execute Tally and check.